

STRATOLABS

STRATOLABS

Getting Started

FTP Client for Windows Operating Systems*

STRATOLABS

2.12.2019

Getting Started

INHALTSVERZEICHNIS

1. OVERVIEW	2
2. ENTERING A NEW FTP CONNECTION	3
2.1 DESCRIPTION OF THE DIALOG "OPEN CONNECTION"	4
2.2 THE "OPEN CONNECTION" DIALOG WITH THE "CONNECTION INFORMATION" REGISTER-TAB	5
2.3 THE "OPEN CONNECTION" DIALOG WITH THE "CONNECTION LIBRARY" REGISTER-TAB	7
2.3.1 THE "OPEN CONNECTION" DIALOG WITH THE "CONNECTION LIBRARY" REGISTER-TAB AND THE "EDIT CONNECTION INFORMATION..." BUTTON AND THE DIALOGUE OF THE SAME NAME	9
2.4 OPEN AN FTP CONNECTION IN THE MAIN WINDOW OF THIS APPLICATION.....	11
3.0 MAIN WINDOW OF THE APPLICATION WITH THE CAPTION "STRATOLABS FTP CLIENT ..."	12
3.1 MAIN WINDOW OF APPLICATION WITH ADMINISTRATION AREA... ..	14
3.2 MAIN WINDOW OF THE APPLICATION WITH DIRECTORY AND FILE AREA.....	16
3.3 MAIN WINDOW OF THE APPLICATION WITH SERVER AREA	17
3.4 MAIN WINDOW OF THE APPLICATION WITH CONNECTION FLOW ..	18
3.5 MAIN WINDOW OF THE APPLICATION WITH UP-AND-DOWN-BUTTONS FOR THE UPLOAD AND THE DOWNLOAD.....	19

Getting Started

1. OVERVIEW

Here is, how to navigate the STRATOLABS application "FTP Client for Windows Operating Systems*".

The application is currently in the second release and here in the first version.

This application extends the STRATOLABS application "FTP Client for Windows Operating Systems*", which is currently in the first release and in the third version, for the future.

Used by the STRATOLABS application "FTP Client for Windows Operating Systems*", the Windows operating systems* are supported in the versions 2016, 10, 2012, 8.1, 8, 7, Vista.

The goal is to access an FTP server by deploying this application using FTP.

Scope of this application is the data transfer for current and stable Windows IIS FTP servers, FTP servers, Linux FTP servers, Unix FTP servers, Netware FTP servers and Open Source FTP servers.

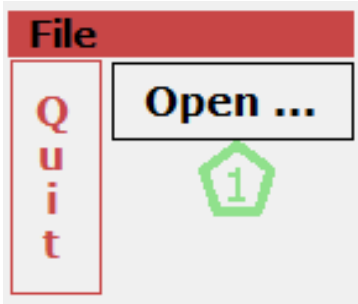
To use this STRATOLABS application, you need a valid STRATOLABS license letter.

You will only receive this personalised STRATOLABS license letter from STRATOLABS with STRATOLABS Christian Benz after payment of the one-time license fee.

Biberach an der Riss, in December 2019, Christian Benz.

Getting Started

2. ENTERING A NEW FTP CONNECTION

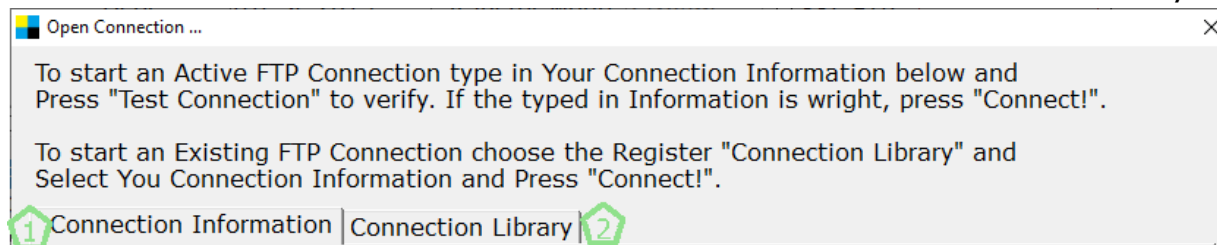


Pressing the button with the caption "Open ..." (Marker One) in the main window of the application opens the dialog "Open Connection" (see point 2.1).

Getting Started

2.1 DESCRIPTION OF THE DIALOG "OPEN CONNECTION"

The Open Connection dialog is divided into two tabs with the labels "Connection Information" and "Connection Library".

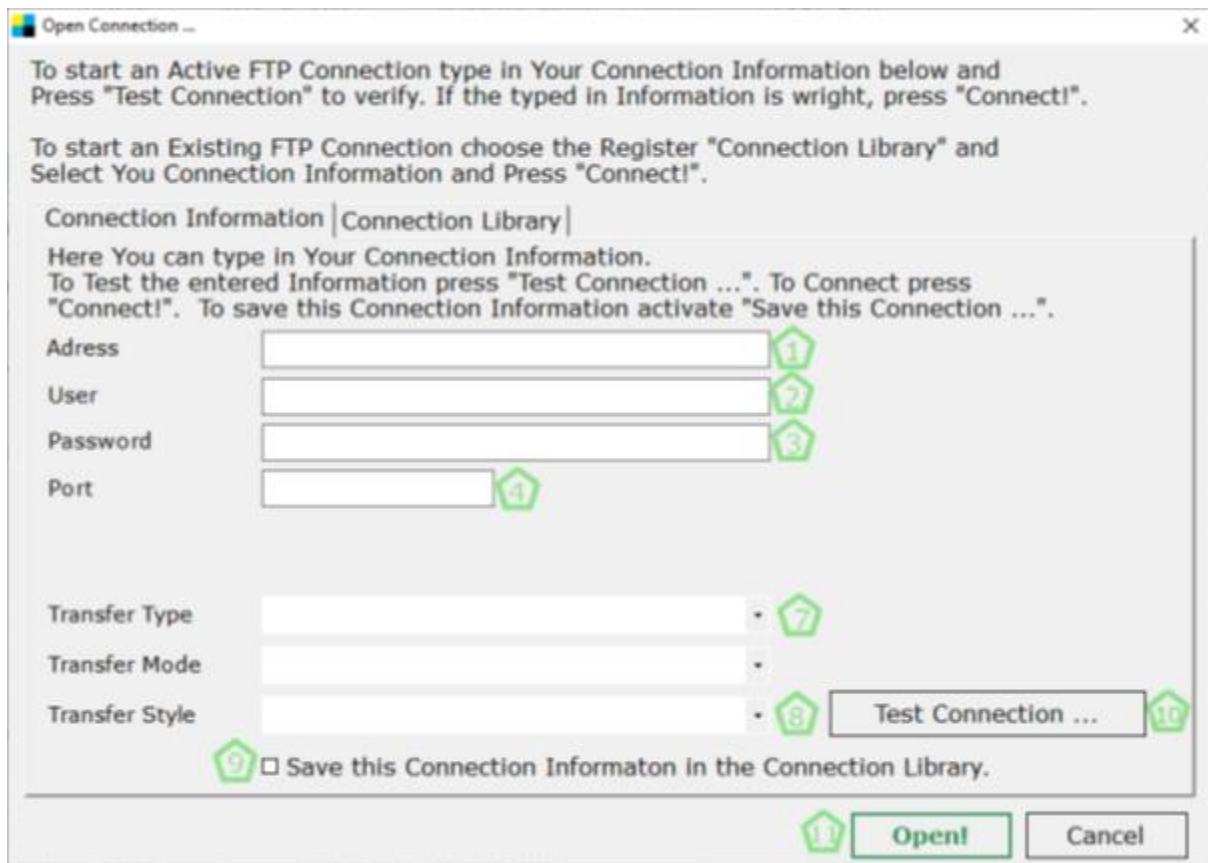


The two register-tabs (Markerer 1 and Markerer 2) represent the following content and functions (see point 2.2 and 2.3 below).

Getting Started

2.2 THE "OPEN CONNECTION" DIALOG WITH THE "CONNECTION INFORMATION" REGISTER-TAB

The Connection Information register-tab in the Open Connection dialog may look like this:



The register-tab labeled "Connection Information" provides the ability to enter connection data (Markering one to eight) to a single connection by the keyboard. Then the selection 9 is selected, press the button „Test Connection ...“ to verify the entered connection information and to save this connection information the connection library (Marker 10).

As an alternative to testing, the connection information entered is transferred to the main application window by pressing button 11 (see point 2.4).

These Markerings are in detail:

Authorship since 2019 Christian Benz

Copyright since 2020 STRATOLABS mit STRATOLABS Christian Benz

All Rights reserved. All information without guarantee.

www.stratolabs.de – contact@stratolabs.de

Getting Started

Marker One: The address of the FTP server in the form of IPv4 or IPv6 must be entered in the text box labeled "Address". Alternatively, the name of the www server is allowed.

Marker Two: The user name for the FTP server must be entered in the text box labelled "User".

Marker Three: In the text box with the label "Password" the password corresponding to the user name must be entered.

Marker Four: The text box labeled "Port" shall include the server-side port provided for FTP data transfers to the connection information (see **Markers One to Three**). Standard here is 21; here, provider-related deviations are possible; if in doubt, ask your server administrator.

Marker Seven: In the Transfer Type selection box, you specify the type of data transfers. There is a choice between Ascii, Binary and Ebcidic.

Marker Eight: In the "Transfer Style" selection box, the two items "Passive Transfer" and "Active Transfer" are available.

Marker Nine: With the checkbox at "Save this Connection in the Connection Library" there is the option to store the connection information entered under Marker one to eight in the "Connection Library" (see also point 2.2) in order to connection information should not be re-entered.

Marker Ten: Pressing the „Test Connection“-button attempts to connect to the server using the connection information entered under **Marker one to eight**; if the information is correct, this will be displayed as a message; if the connection information is incorrect or missing, this is indicated by a corresponding message.

Marker Eleven: The "Open!" button applies by copy the connection information entered within the "Connection Information" tab to the main window of the application (see point 2.4).

Authorship since 2019 Christian Benz

Copyright since 2020 STRATOLABS mit STRATOLABS Christian Benz

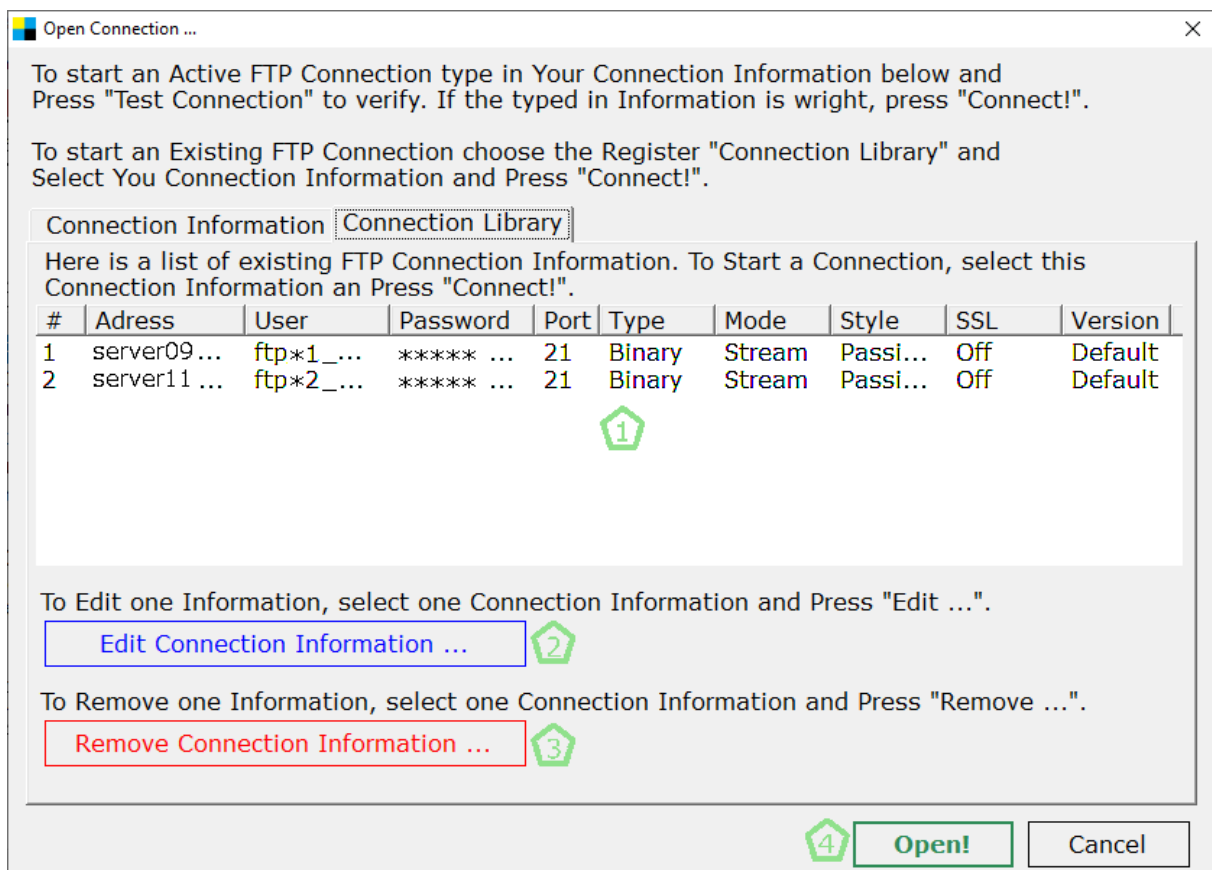
All Rights reserved. All information without guarantee.

www.stratolabs.de – contact@stratolabs.de

Page **6** of **19**

Getting Started

2.3 THE "OPEN CONNECTION" DIALOG WITH THE "CONNECTION LIBRARY" REGISTER-TAB



The tab labeled "Connection Library" provides the option to select the connection data for a single connection from the stored connection data (Marker one) and to use the "Open!" button to the main window for the "Connect!" button (see point 3.1).

With the "Edit Connection Information ..." button (Marker Two) can edit the connection data of a connection that has already been saved and selected under Marker One (see point 2.3.1).

With the "Remove Connection Information ..." button (Marker 3) the connection data of an already saved connection and selected under Marker One can be deleted.

Authorship since 2019 Christian Benz

Copyright since 2020 STRATOLABS mit STRATOLABS Christian Benz

All Rights reserved. All information without guarantee.

www.stratolabs.de – contact@stratolabs.de

Page 7 of 19

Getting Started

Marker Four: The "Open!" button applies by copy the connection information selected within the "Connection Information" tab to the main window of the application (see point 3.1 with the selection 5).

Getting Started

2.3.1 THE "OPEN CONNECTION" DIALOG WITH THE "CONNECTION LIBRARY" REGISTER-TAB AND THE "EDIT CONNECTION INFORMATION..." BUTTON AND THE DIALOGUE OF THE SAME NAME

With the button labeled "Edit Connection Information ..." the following dialog with the label "Edit Connection Information" is displayed.

Here You can edit the Connection Information of the selected Connection. If You are ready, press "Test Connection ..." to test this Connection Information. If You want to save this Connection Information press "Save ...". If You want to cancel press "Cancel".

#	2
Address	server09
User	ftp*1_
Password	*****
Port	21
Transfer Type	Binary
Transfer Mode	Stream
Transfer Style	Passive Transfer

Buttons: Test Connection ... (9), Save ... (10), Cancel

In this dialog, Markers one to ten represent the following content or function:

Marker One: The address of the FTP server in the form of IPv4 or IPv6 must be entered in the text box labeled "Address". Alternatively, the name of the www server is allowed.

Marker Two: The user name for the FTP server must be entered in the text box labelled "User".

Marker Three: In the text box with the label "Password" the password corresponding to the user name must be entered.

Authorship since 2019 Christian Benz

Copyright since 2020 STRATOLABS mit STRATOLABS Christian Benz

All Rights reserved. All information without guarantee.

www.stratolabs.de – contact@stratolabs.de

Page 9 of 19

Getting Started

Marker Four: The text box labeled "Port" shall include the server-side port provided for FTP data transfers to the connection information (see Markers One to Three). Standard here is 21; here, provider-related deviations are possible; if in doubt, ask your server administrator.

Marker Seven: In the selection box labeled "Transfer Type," you specify the type of data transfers. There is a choice between Ascii, Binary and Ebcdic.

Marker Eight: In the selection box labeled "Transfer Style" the two options "Passive Transfer" and "Active Transfer" are present.

Marker Nine: Pressing the button labeled "Test Connection ..." the connection information entered can be tested. A connection attempt is made and a message is issued as a result as to whether the connection information is conclusive or whether it is incorrect or missing.

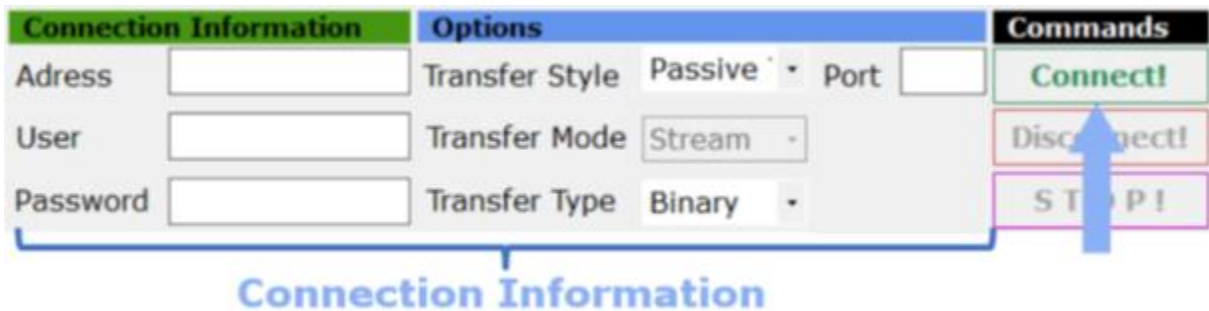
Marker Ten: With the button labeled "Save ..." the connection information contained within the "Edit Connection Information" tab will be saved back to the connection library.

Getting Started

2.4 OPEN AN FTP CONNECTION IN THE MAIN WINDOW OF THIS APPLICATION

Connection Information		Options		Commands
Adress	<input type="text"/>	Transfer Style	Passive ▾ Port <input type="text"/>	Connect!
User	<input type="text"/>	Transfer Mode	Stream ▾	Disconnect!
Password	<input type="text"/>	Transfer Type	Binary ▾	STOP!

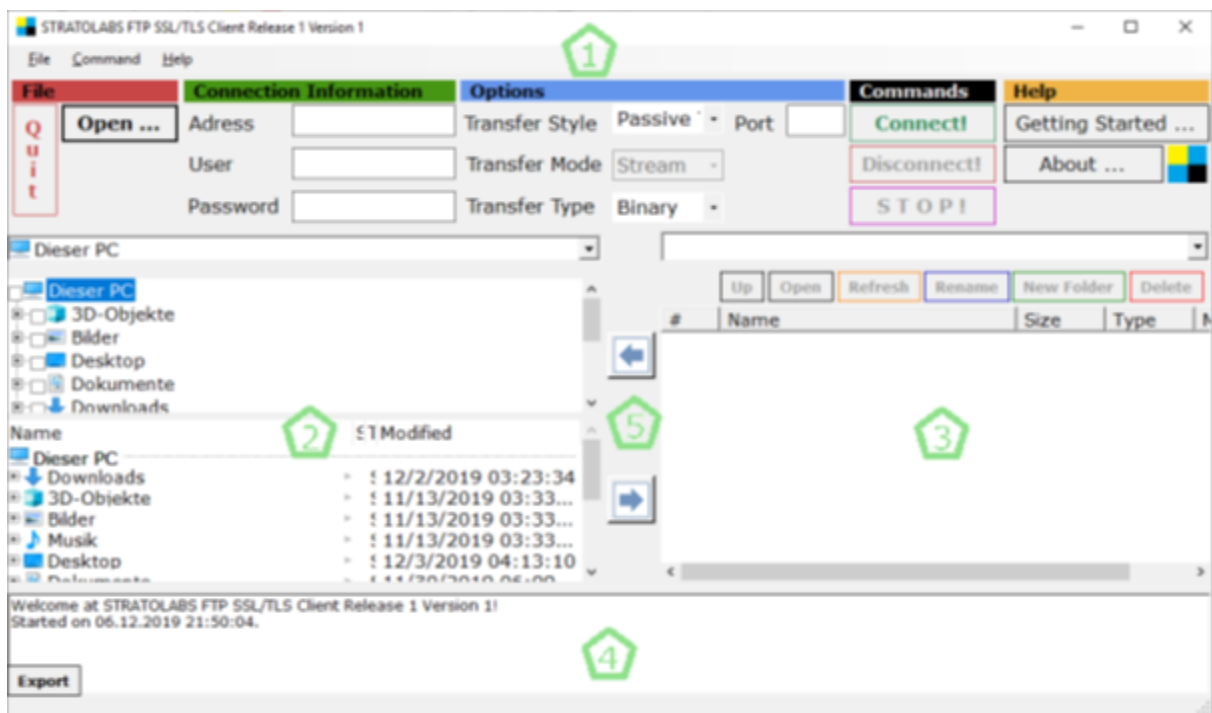
Connection Information



If all the correct data of the Connection Information has been entered or has previously been transferred from the "Open Connection" dialog or from the "Connection Library", you can connect to the specified FTP server by pressing the "Connect!" button.

Getting Started

3.0 MAIN WINDOW OF THE APPLICATION WITH THE CAPTION "STRATOLABS FTP CLIENT ..."



Marker 1: The upper part of the main window is divided into the acting and colored summaries "File", "Connection Information", "Options", "Commands" and "Help" and can be considered as an administration area (see point 3.1).

Marker 2: The left pane of the main window shows the choices of directory and files that are required to transfer to the server or from the server to the local storage resources (see point 3.2).

Marker 3: The right pane of the main window displays the contents of the connected server and multiple buttons. These buttons have the labels "Up", "Open", "Refresh", "Rename", "New Folder" and "Delete" (see point 3.3).

Marker 4: The connection flow is displayed at the bottom of the main window. Here, all steps required in the transmission and processing history are output by system messages. These can be saved in a text file by pressing the "Export" button (bottom left of the image) (see point 3.4).

Authorship since 2019 Christian Benz

Copyright since 2020 STRATOLABS mit STRATOLABS Christian Benz

All Rights reserved. All information without guarantee.

www.stratolabs.de – contact@stratolabs.de

Page **12** of **19**

Getting Started

Marker 5: In the middle of the main window, the two buttons are positioned for upload and download (see point 3.5).

Getting Started

3.1 MAIN WINDOW OF APPLICATION WITH ADMINISTRATION AREA

In the administration area of the main window, it may look like this and be divided into six Markerers:



Marker 1: The button labeled "Quit" can be used to terminate this application.

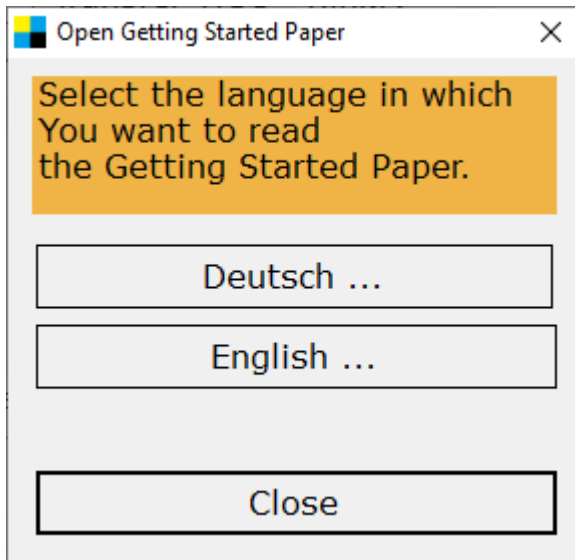
Marker 2: With the button labeled "Open ..." (as described in point 2) the connection data can be loaded or entered.

Marker 3: The connection data required for an FTP server is entered into the text boxes with the labels Address, User and Password.

Marker 4: In the "Options" area, settings are made for the connection data, including the port provided by the FTP server for transfers (default here is port 21); check with your server administrator of your FTP server here or refer to the FTP server documentation.

Marker 5: The "Connect!" button connects to the FTP server to the correct existing connection data and parameters. The button labeled "Disconnect!" terminates an open connection to the FTP server and "STOP!" ends the current transfer in the upload or download.

Getting Started



Marker 6: With the "Getting Started" button, you can use the dialog shown below to open this short introduction ("Getting Started", which is stored in PDF and XPS format in the installation directory of this application).

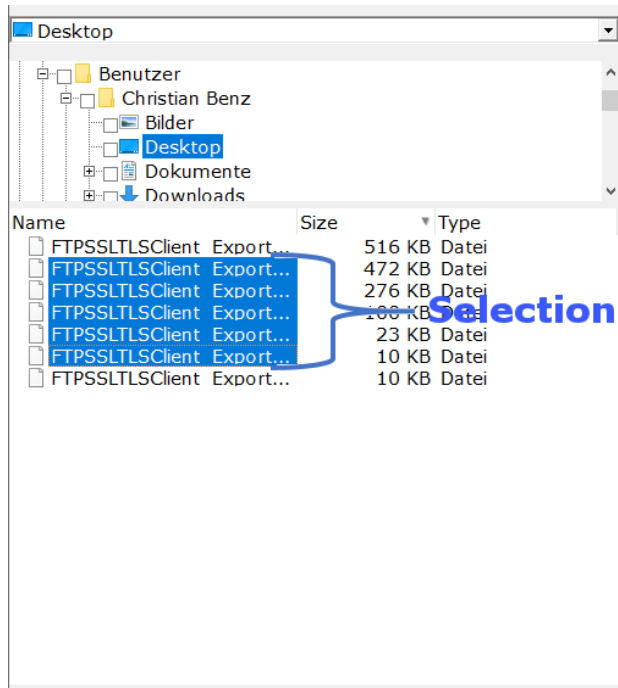


And via the button with the caption "About ..." information on the author and copyright of this STRATOLABS application will be showed.

Getting Started

3.2 MAIN WINDOW OF THE APPLICATION WITH DIRECTORY AND FILE AREA

The left pane of the main window shows the choices of the directory and files that are required to transfer to the server or from the server to the local storage resources.

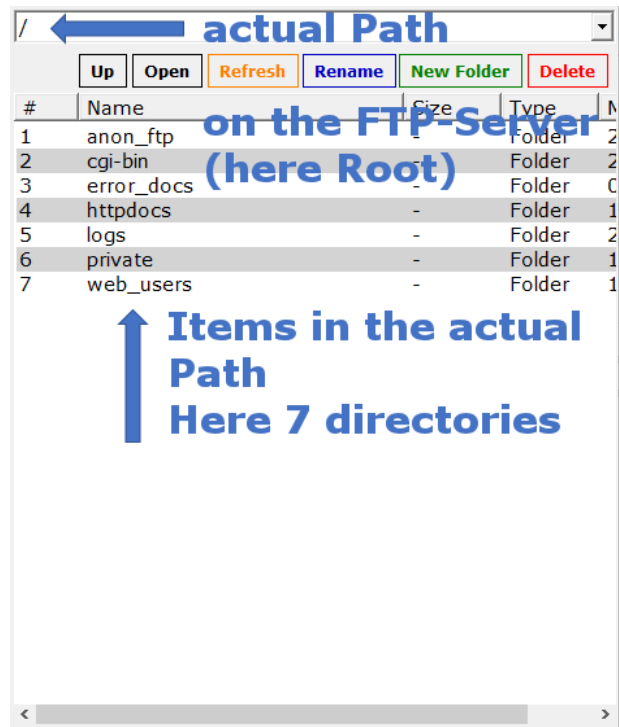


This means that directory and file transfers require a selection with the mouse. Color-stored entries are transferred to the FTP server here in and below the currently selected path.

Getting Started

3.3 MAIN WINDOW OF THE APPLICATION WITH SERVER AREA

The right pane of the main window displays the contents of the connected server. The switching buttons with text label are explained by their inscription.



Getting Started

3.4 MAIN WINDOW OF THE APPLICATION WITH CONNECTION FLOW

The connection flow is displayed at the bottom of the main window.

Here, all steps required in the transmission and processing history are output by system messages.

These can be saved in a text file by pressing the "Export" button (bottom left of the image).

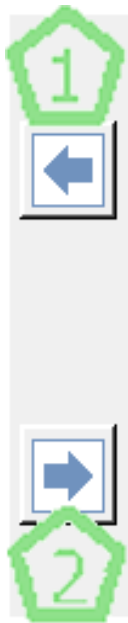
The representation of the connection and transmission flow may look like this:

```
01.12.2019 18:12:38 Statement: 227 Entering Passive Mode (185,117,168,212,217,78).
01.12.2019 18:12:39 Command: LIST /
01.12.2019 18:12:39 Statement: 125 Data connection already open; Transfer starting.
01.12.2019 18:12:39 Data connection established.
19 18:12:39 Statement: 226 Transfer complete.
19 18:12:39 Statement:
```

Export

Getting Started

3.5 MAIN WINDOW OF THE APPLICATION WITH UP-AND-DOWN-BUTTONS FOR THE UPLOAD AND THE DOWNLOAD



With the two buttons for upload (Marker two) and download (Marker one) selected data (directories with content and files) are transferred to and from the FTP server as shown in point 3.2.