

# STRATOLABS

STRATOLABS

## Getting Started

for STRATOLABS Colors for Windows Operating Systems\*

stratolabs

11.5.2020

## CONTENTS

1. Overview .....	2
2. SELECTION Of COLORS WITH THE Dialog „Color Palette“ in MAIN SELECTION ON THE RIGHT SIdE .....	3
3. Description of the Dialog „Color Container“ .....	5
3.1 SAVE a Palette in A FILE .....	6
3.2 OPEN OF A Palette FROM a FILE .....	7
4. Description of the Dialog „Value Setting“ .....	8
5. Description of the Dialog „Image Picker“ .....	9

## 1. OVERVIEW

Here is Described how to find your way about the STRATOLABS "Colors for Windows Operating Systems\*" application.

This STRATOLABS application is currently in its first release and here in the third version.

Supported by this STRATOLABS application, the windows operating systems\* are available in versions 10, 8.1, 8, 7, Vista, XP, 2000, and windows operating systems\* in versions 2019, 2016, 2012, 2008, 2003 and 2000.

Since deployment in 1999, the aim of this STRATOLABS application has been to select, calculate, reconcile, and storage of color values.

The scope of this STRATOLABS application is intended for use in software development projects, web development projects as well as as a precursor in the design of logos and brands.

Please note that you need a valid STRATOLABS license letter for the legally secure installation and use of this STRATOLABS application.

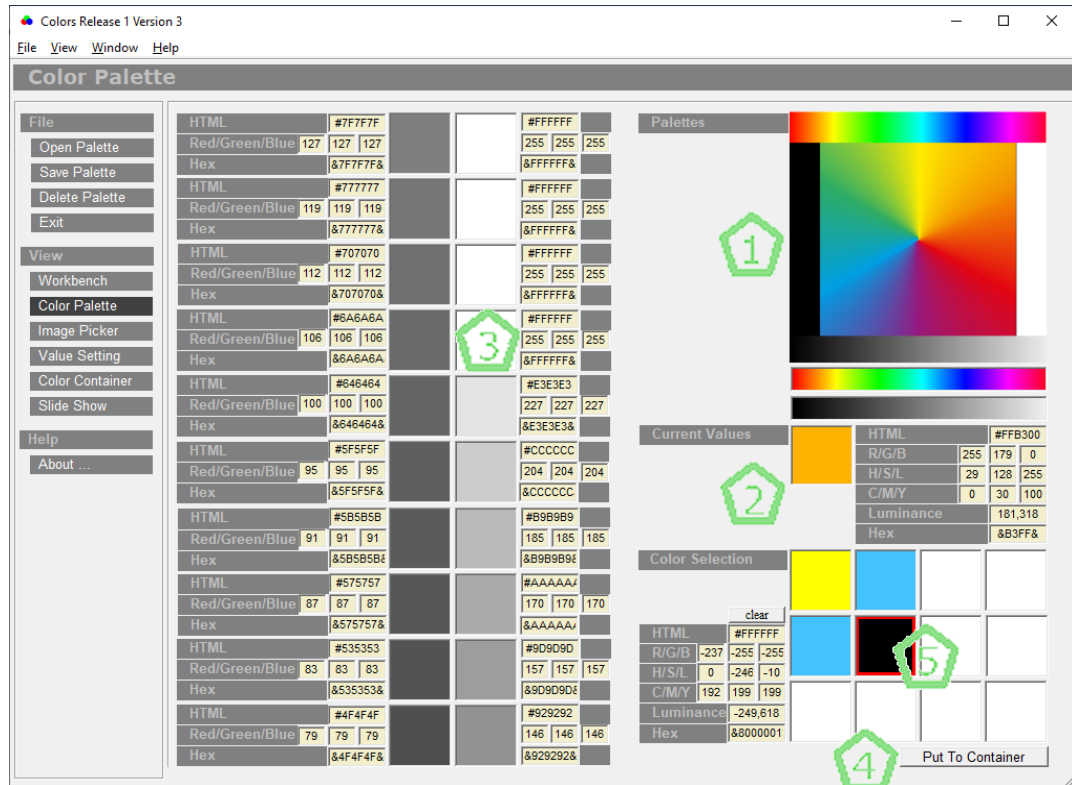
You will only receive this personalised STRATOLABS license letter from STRATOLABS with STRATOLABS Christian Benz after payment of the one-time license fee.

Biberach an der Riß, in May 2020, Christian Benz.

**STRATOLABS**

## 2. SELECTION OF COLORS WITH THE DIALOG „COLOR PALETTE“ IN MAIN SELECTION ON THE RIGHT SIDE

The „Color Palette“ dialog in the application can look like this:



The five dialog areas (marker 1 to marker 5) represent the following content and the following functions:

**Mark 1:** Color palettes black-and-white, black-gray-white, rainbow colors in square and vector in rainbow colors. Here, by positioning the mouse pointer and pressing the right or left mouse button, a selection is set, the color gradations of which are displayed under dialog area around mark five.

**Mark 2:** Here the color value currently covered with the mouse pointer under **Mark one** is displayed and for this color value the computational values are displayed in HTML, RGB, HSL, CMYK and as hex values.

**Mark 3:** Here, the responding colors of the selected one are displayed with the respective color values, which were selected

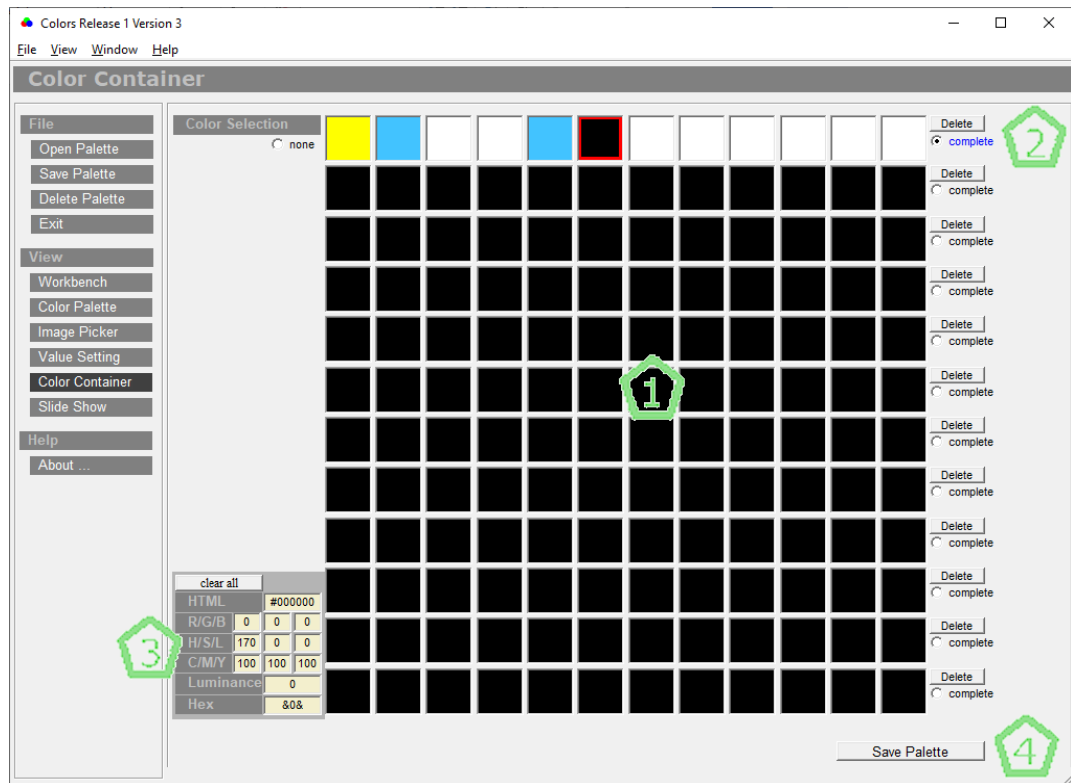
under dialog area one with the mouse and here with the right or left mouse button.

**Mark 4:** Colors selected under **Marker three** can be added by pressing the „Put to Container“ button.

**Mark 5:** Color container with the capacity to record 12 color values. If the selected colors are included here, they can be viewed via the "Color Container" dialog (see point 4.)

### 3. DESCRIPTION OF THE DIALOG „COLOR CONTAINER“

The „Color Container“ dialog in the application can look like this:



The four dialog areas (marker 1 to marker 4) stand for the following content and for the following functions:

**Mark 1:** Display of 12 color containers, each of which can contain 12 values as a color palette.

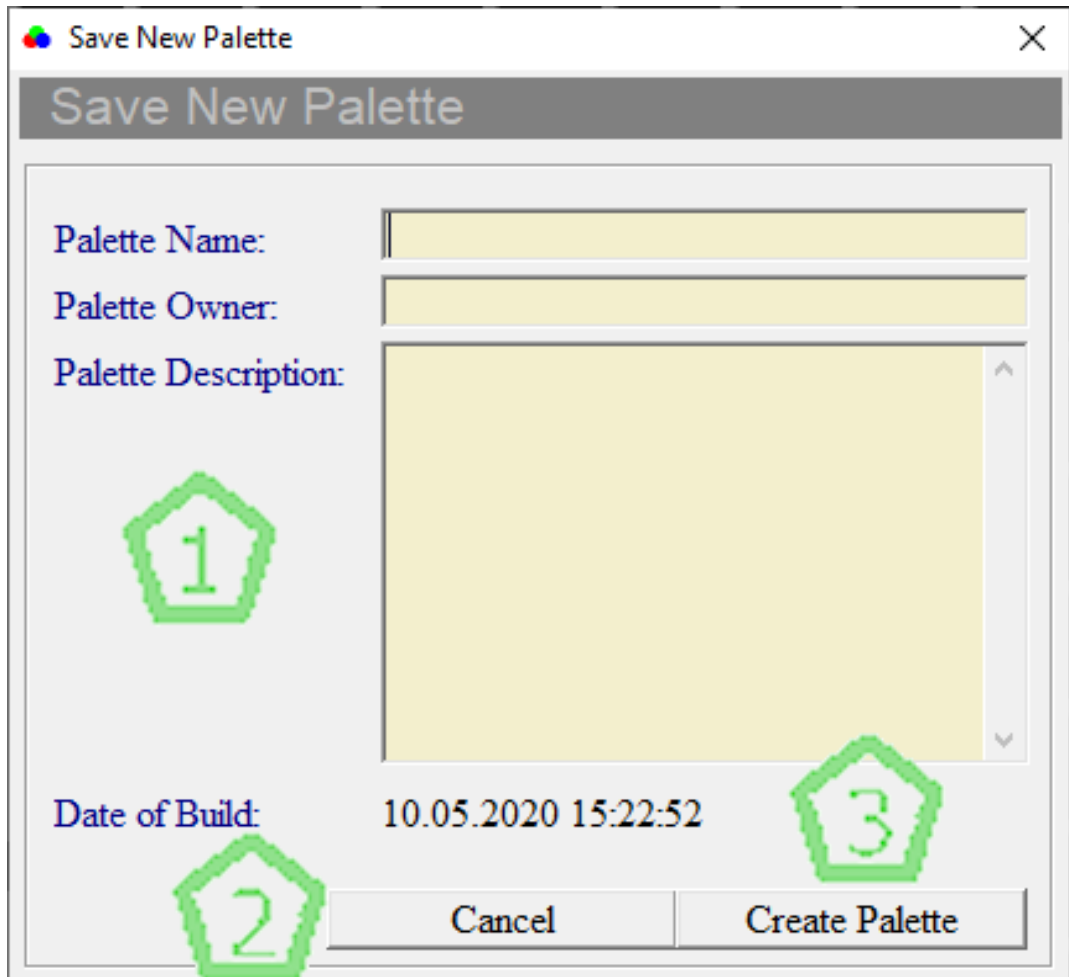
**Mark 2:** Button "Delete" with which a color container can be deleted at a time.

**Mark 3:** Detail display for a selected color (red border on this selected color with the display of the respective color values in HTML, RGB, HSL, CMYK, and Hex).

**Mark 4:** The "Save Palette" button can be used to back up the complete representation of 12 color containers in one file (see point 4.1).

### 3.1 SAVE A PALETTE IN A FILE

The „Save New Palette“ dialog may look like this:



The markings one to three represent the following function:

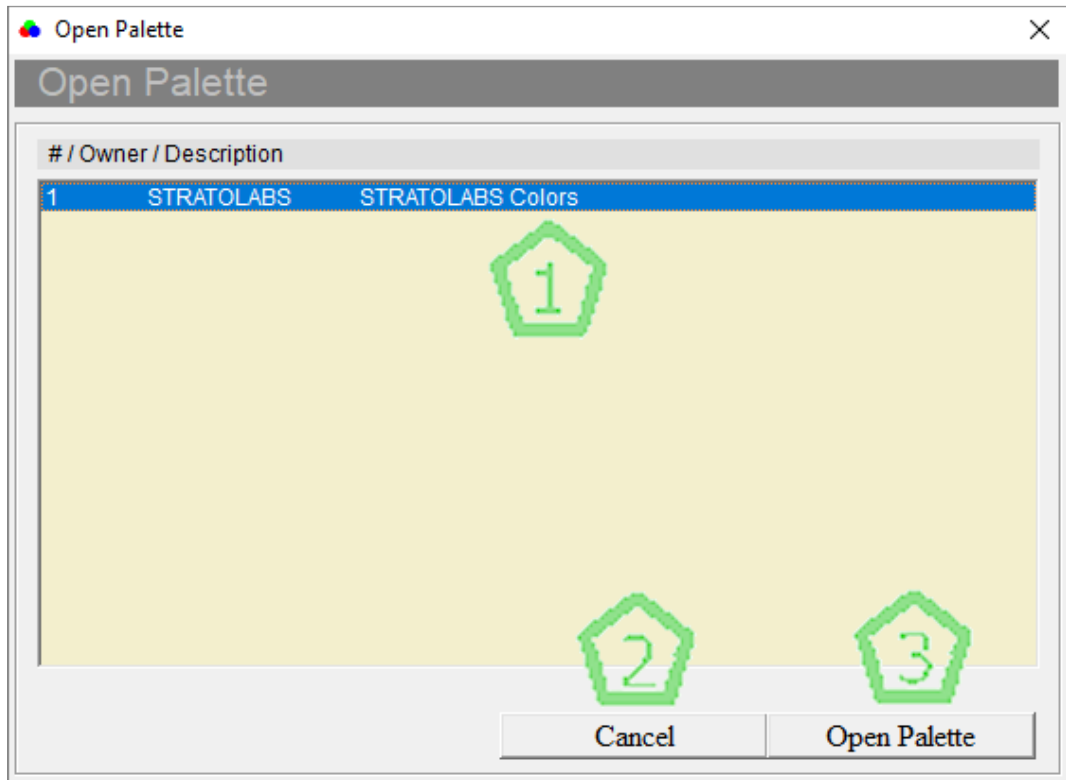
**Mark 1:** Input fields for pallet name, pallet owner, pallet description.

**Mark 2:** "Cancel" button to cancel the save operation.

**Mark 3:** Create Palette button for saving the current palette (pallets are stored in the "data" subfolder in the application directory).

## 3.2 OPEN OF A PALETTE FROM A FILE

The Open Palette dialog may look like this:



The markings one to three represent the following function:

**Mark 1:** Selecting a saved palette (palettes are stored in the subfolder "data" in the application directory)

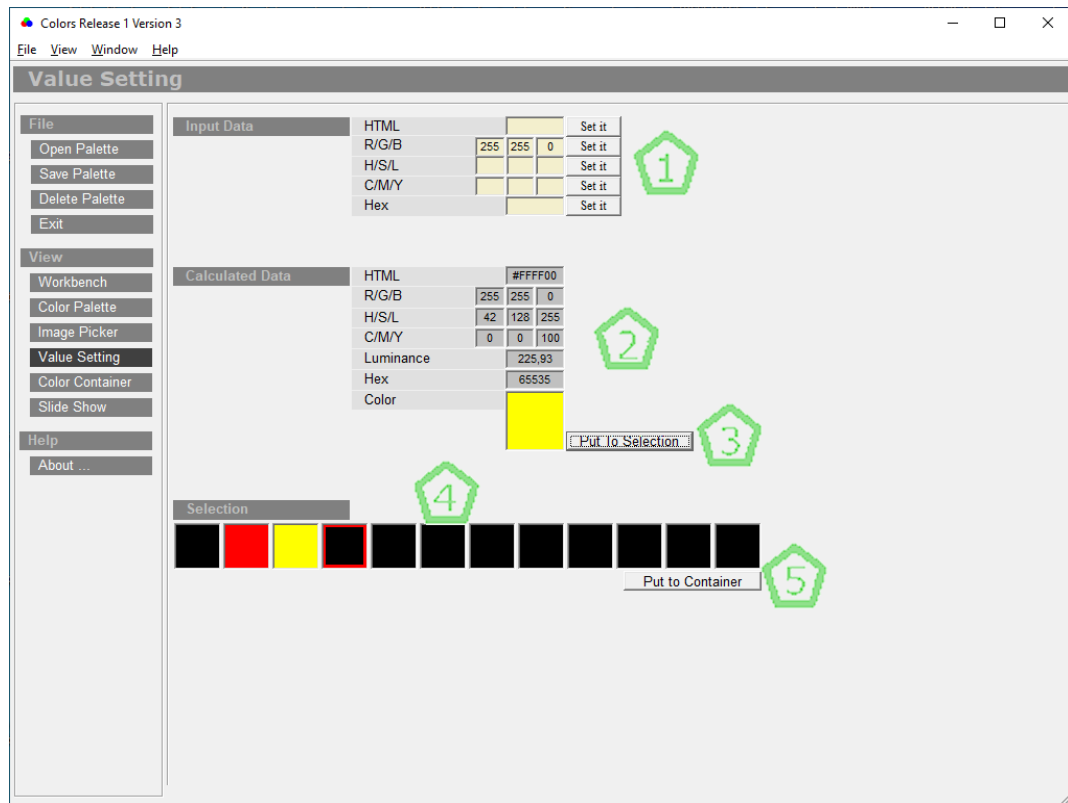
**Mark 2:** "Cancel" button for cancelling this dialog.

**Mark 3:** Open Palette button for opening the selected palette.



## 4. DESCRIPTION OF THE DIALOG „VALUE SETTING“

For example, the „Value Setting“ dialog might look like this:



The markings one to five represent the following content or function:

**Mark 1:** Input fields for color values with the respective "Set it" button.

**Mark 2:** Output fields for color values.

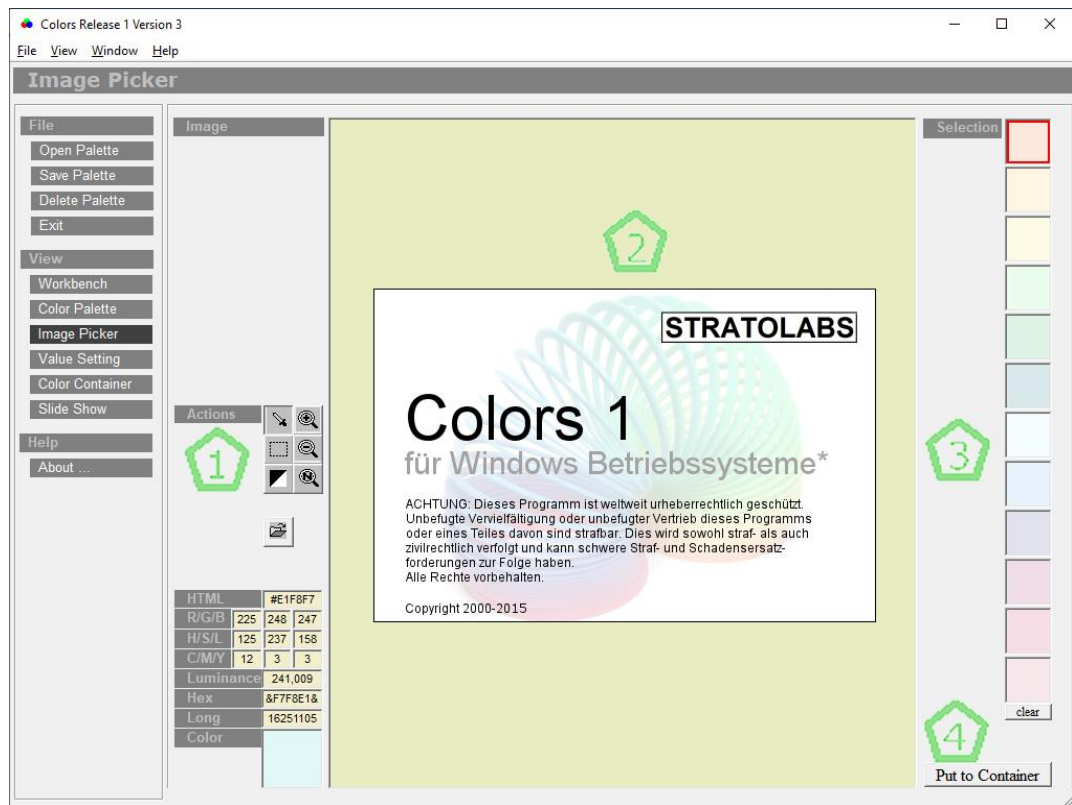
**Mark 3:** Put to Container button that adds the current color to containers under **Mark 4**.

**Mark 4:** Single container for color values filled with the "Put to Container" button under **Mark 3**.

**Mark 5:** "Put to Container" button under dialog point "Selection". Here the selection is added to the "Color Container" (see point 3.).

## 5. DESCRIPTION OF THE DIALOG „IMAGE PICKER“

The „Image Picker“ dialog in the application may look like this:



The markings one to four represent the following function:

**Mark 1:** Below the „Actions“ dialog point is a small collection of tools that can be applied to the image area under Selection two.

**Mark 2:** Image area where the respective colors of the pixels can be read out with the eyedropper. Also, the image section can be enlarged or reduced or the image can be displayed in a color inverted.

**Mark 3:** Colors of pixel-read-out with the pipette.

**Mark 4:** "Put to Container" button. Here the selection is added to the "Color Container" (see point 4.).

**STRATOLABS**

Copyright © since 1999 STRATOLABS Christian Benz

Authorship since 1999 Christian Benz

[www.stratolabs.de](http://www.stratolabs.de) [contact@stratolabs.de](mailto:contact@stratolabs.de)

Alle Rechte vorbehalten. Alle Angabe ohne Gewähr.